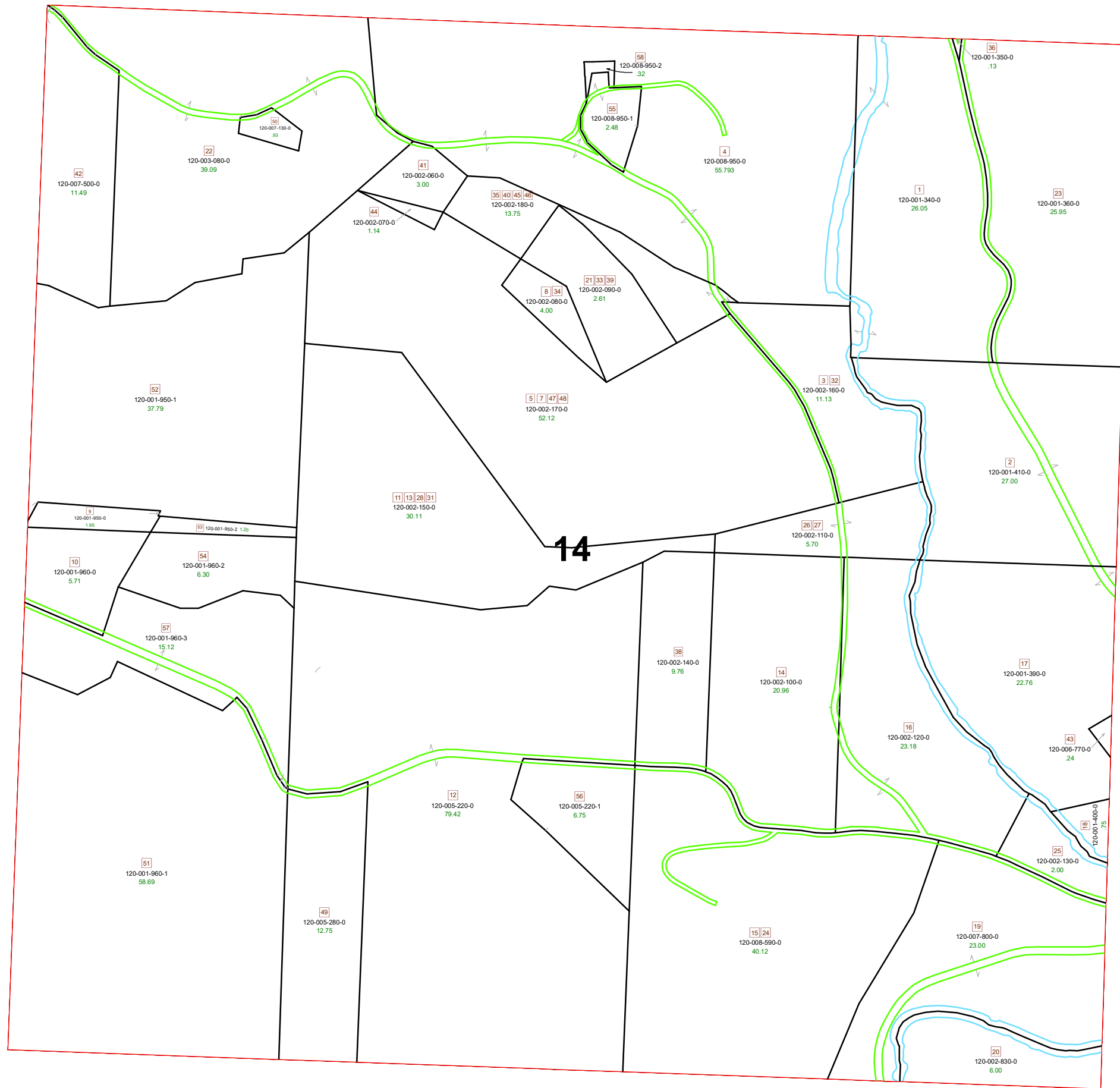
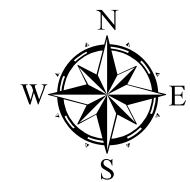


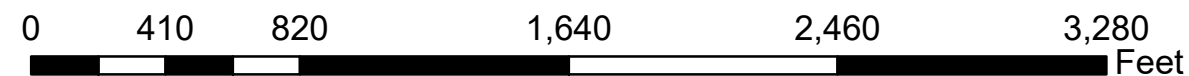
# MEIGSVILLE TOWNSHIP SECTION 14 R11 TWP 10 MORGAN COUNTY, OHIO



PIN	VOL	PAG	Owner	LegalDescr	Acres
120-001-400-0	OR230	1	CNX LAND LLC	R11 T10 S14 SD 18	0.75
120-001-390-0	OR230	1	CNX LAND LLC	R11 T10 S14 SD 17	22.76
120-001-410-0	OR230	1	CNX LAND LLC	R11 T10 S14 SD 2 F	27
120-001-360-0	OR230	1	CNX LAND LLC	R11 T10 S14 SD 23	25.95
120-001-350-0	OR230	1	CNX LAND LLC	R11 T10 S14 SD 36	0.13
120-001-340-0	OR230	1	CNX LAND LLC	R11 T10 S14 SD 1 L	26.05
120-001-960-1	D.V 203	663	COYLE KENT H	R11 T10 S14 SD 51	58.691
120-001-960-3	OR167	754	COYLE KENT H & DAWN LYNN	R11 T10 S14 SD 57	15.12
120-002-130-0	OR112	535	CROW DONALD B & LOIS C TRU	R11 T10 S14 SD 25	2
120-002-120-0	OR112	535	CROW DONALD B & LOIS C TRU	R11 T10 S14 SD 16	23.18
120-002-100-0	OR112	535	CROW DONALD B & LOIS C TRU	R11 T10 S14 SD 14	20.96
120-002-140-0	OR112	535	CROW DONALD B & LOIS C TRU	R11 T10 S14 SD 38	9.76
120-002-110-0	OR112	535	CROW DONALD B & LOIS C TRU	R11 T10 S14 SD 26-	5.7
120-002-150-0	OR112	535	CROW DONALD B & LOIS C TRU	R11 T10 S14 SD 11-	30.11
120-002-160-0	OR112	535	CROW DONALD B & LOIS C TRU	R11 T10 S14 SD 3-2	11.13
120-002-170-0	OR112	535	CROW DONALD B & LOIS C TRU	R11 T10 S14 SD 5-7	52.12
120-002-180-0	OR112	535	CROW DONALD B & LOIS C TRU	R11 T10 S14 SD 35-	13.75
120-002-080-0	OR112	535	CROW WILLIAM H JR & DAVID M	R11 T10 S14 SD 8-3	4
120-002-090-0	OR112	535	CROW WILLIAM H JR & DAVID M	R11 T10 S14 SD 21-	2.61
120-002-070-0	D.V 112	535	CROW WILLIAM H JR & DAVID M	R11 T10 S14 SD 44	1.14
120-002-060-0	D.V 112	535	CROW WILLIAM H JR & DAVID M	R11 T10 S14 SD 41	3
120-002-830-0	OR229	2376	EUBANK ALICE TRUSTEE OF TR	R11 T10 S14 SD 20	6
120-007-800-0	OR161	261	EUBANK DAVID E & GINGER G	R11 T10 S14 SD 19	23
120-007-130-0	OR188	356	HARTL GABRIEL M & ESTHER S	R11 T10 S14 SD 50	0.928
120-003-080-0	OR188	356	HARTL GABRIEL M & ESTHER S	R11 T10 S14 SD 22	39.092
120-005-220-1	OR166	709	LINDIMORE JACOB A & TRISTA L	R11 T10 S14 SD 56	6.754
120-005-280-0	D.V 169	63	LINDIMORE TRACY A	R11 T10 S14 SD 49	12.747
120-005-220-0	OR181	280	LINDIMORE TRACY A & ELAINE	R11 T10 S14 SD 12	79.419
120-001-960-2	OR177	597	LINDIMORE TYRELL A	R11 T10 S14 SD 54	6.3
120-001-950-2	OR177	597	LINDIMORE TYRELL A	R11 T10 S14 SD 53	1.201
120-001-950-1	OR177	597	LINDIMORE TYRELL A	R11 T10 S14 SD 52	37.792
120-008-950-0	OR225	2848	LINDIMORE WESLEY L	R11 T10 S14 SD 4	55.793
120-006-770-0			OHIO POWER COMPANY ATTN:	R11 T10 S12 SD 43	0.24
120-007-500-0	D.V 197	299	SAMSON BENJAMIN FRANKLIN E	R11 T10 S14 SD 42	11.49
120-001-960-0	OR228	1088	WARDEN ROBERT J JR	R11 T10 S14 SD 10	5.714
120-001-950-0	OR228	1088	WARDEN ROBERT J JR	R11 T10 S14 SD 9	1.951
120-008-590-0	OR216	2343	WEBB ELI E	R11 T10 S14 SD 15-	40.12
120-008-950-1	OR225	2551	WEINERT EDWARD J	R11 T10 S14 SD 55	2.48
120-008-950-2	OR225	2551	WEINERT EDWARD J	R11 T10 S14 SD 58	0.32



Boundaries	
	Hydro
	Section
	Roads
	Lot
	Township
	County
	Parcel
	ROW



Disclaimer: The information that these maps contains is for reference purposes only. Please bring any errors to the attention of the Engineer's Office staff. Thank you